

# ***Tapmoon***

## **Tapmoon Liquidity Program**



# **Business Plan**



Be Ready To Explore

# **#CRYPTO 2025**

A crypto elevation program by  Tapmoon

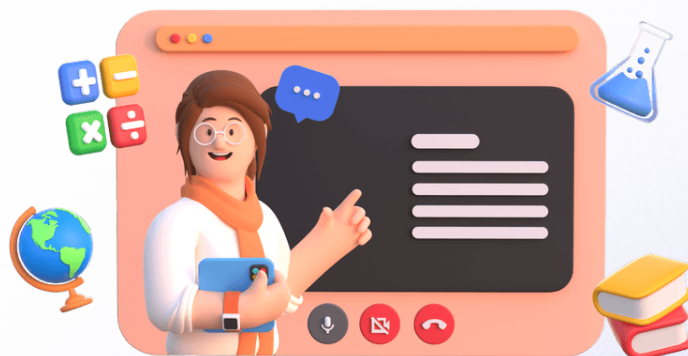




Tapmoon invites users to join its Liquidity Providing Program by contributing USDT and TAPS tokens to the liquidity pool. Participants earn daily rewards over a period of 500 days based on their contributions.

## Joining Packages & Admin Fees

Participant should pay 50% in TAPS Token and 50 % in USDT to upgrade the package.  
10% Admin charges applicable ( USDT ).



Package	TAPS Tokens (via PancakeSwap)	USDT Contribution	Admin Fee (10%)	Total Cost
\$ 100	\$ 50	\$ 50	\$ 10	\$ 110
\$250	\$125	\$125	\$25	\$275
\$500	\$250	\$250	\$50	\$550
\$1,000	\$500	\$500	\$100	\$1,100
\$2,500	\$1,250	\$1,250	\$250	\$2,750



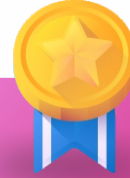
## Passive Income

Tapmoon offers two types of daily rewards over a span of 500 days:



### 0.40% Daily Liquidity Reward

Earned in TAPS tokens as a reward for providing liquidity.



### 0.10% Daily Task Reward

An additional daily reward of 0.10% in TAPS tokens is provided upon task completion.

**Note: Passive income withdrawals processed automatically to the address generated in Tapmoon Wallet.**

## Reward Calculation Examples

### \$100 Package

- \* 0.40% Daily Liquidity Reward = \$0.40/day, totaling \$200 in TAPS Token over 500days.
- \* 0.10% Daily Task Reward = \$0.10/day, totaling \$50 in TAPS Token over 500 days.
- \* **Total Potential Earnings: \$250 in TAPS Tokens.**



# 1. Passive Royalty Income (Downline - 50 Levels)

Participants can earn royalty income across 50 levels based on referrals, with the income ratio decreasing across levels. Each additional direct referral unlocks more levels.

Level Range	Income Ratio	Conditions to Unlock Levels
Level 1	25%	1 Direct Referral
Level 2	10%	2 Direct Referrals
Levels 3-5	5%	3 Direct Referrals
Levels 6-10	3%	4 Direct Referrals
Levels 11-20	2%	5 Direct Referrals
Levels 21-30	1%	6 Direct Referrals
Levels 31-50	0.5%	7 Direct Referrals

## Example:

With 5 Direct Referrals, each investing in a \$500 package:

Level 1 Income (25%):  $\$15\$ \text{ per referral} \times 5 = \$75(\text{monthly})$ .



## 2. Passive Royalty Income (Upline - 10 Levels)

Passive royalty income on uplines passive income : Participants earn passive royalty income based on 0.40% daily passive income from upline.

LevelRange	Income Ratio	Conditions to Unlock Levels
Level 1	20%	\$500 Business in any direct leg
Level 2	10%	\$1,000 Business in any direct leg
Levels 3-5	3%	\$1,500 Business in any direct leg
Levels 6-10	2%	\$2,000 Business in any direct leg

**Note:** Passive royalty income will be credited to the first 3 direct topups only.

The same condition applies to downline income up to 10 Levels

## 3. Passive Royalty Club Income (Club-Based Rewards)

55% of the total daily passive income will be distributed among achievers as below table.



Club	Target (Fresh Business)	Max Limit	Reward %
Club 1	\$1,500 from 3 Direct Referrals	\$2,000	25%
Club 2	\$7,500 from 5 Direct Referrals	\$10,000	15%
Club 3	\$15,000 from 7 Direct Referrals	\$20,000	15%

## Example:

If you achieve Club 1 and the daily pool value is \$1,000, you earn 25% of \$1,000 = \$250

## Max Limit:

Upon reaching the maximum earnings for a club, participants are upgraded to the next club, and income from the previous club is deactivated.

## 4. Binary Income

Participants earn 5% on matching pairs with the first pair requirement of 2:1 or 1:2 ratio ( requires 3 direct referrals). Next pairing will be 1:1 ratio.

### Capping

Binary income is capped according to the package selected.

Binary will be available only for 300 days from the first topup of your user ID.



## 5. Weekly Salary income

Achievements are subjected to weekly payouts as below table.

Rank	Left Business	Right Business	Weekly Salry	Duration
Beginner	\$2500	\$2500	\$5	20 Weeks
Junior	\$5000	\$5000	\$10	24 Weeks
Senior	\$10000	\$10000	\$15	28 Weeks
Expert	\$25000	\$25000	\$20	30 Weeks
Leader	\$50000	\$50000	\$40	32 Weeks
Champion	\$100000	\$100000	\$80	36 Weeks

**Note:** Plan designed to reward contributors  
for personal and Team growth



## 6. Pool Reward Income

Tapmoon offers rewards based on business performance, progressively increasing with each pool.

Pool	Direct Business	Team Business	Leg 1	Leg 2	Leg 3	Reward (TAPS tokens)
Pool1	\$500	\$5,500	\$2,000	\$2,000	\$1,500	\$400 or Bangkok trip
Pool2	\$1000	\$10,000	\$4,000	\$4,000	\$2,000	\$750 or Dubai trip
Pool3	\$1500	\$15,000	\$5,000	\$5,000	\$5,000	\$1,000 or Dubai trip + Mobile
Pool4	\$3000	\$25,000	\$10,000	\$10,000	\$5,000	\$1,600 or Dubai trip For Couples
Pool5	\$7500	\$125,000	\$50,000	\$50,000	\$25,000	\$10,000+
Pool6	4 Pool-5 Achievers	4 Pool-5 Achievers (4 Legs)	N/A	N/A	N/A	\$30,000+
Pool7	4 Pool-6 Achievers	4 Pool-6 Achievers (4 Legs)	N/A	N/A	N/A	\$100,000
Pool8	4 Pool-7 Achievers	4 Pool-7 Achievers (4 Legs)	N/A	N/A	N/A	\$450,000



## Other Terms

- \* **Account Renewal After 3.5x Earnings:**  
Once a participant reaches 3.5x their investment in liquidity and referral rewards, they are required to renew their account with a fresh contribution.
- \* **24/7 Withdrawals:** Withdrawals can be requested at any time with a minimum withdrawal amount of \$10 in TAPS tokens.
  - 100% of passive income can be withdrawn to a wallet and traded on PancakeSwap for USDT.
  - Other income has a withdrawal limit of 1% per day, with the option to use 100% for package upgrades (50% in TAPS + 50% in USDT).
- \* Empty ID will need a minimum of \$5 subscription to enable power counting.
- \* Self ID will be considered paid if Sponsor ID is paid

This business plan encompasses all income streams within the Tapmoon Liquidity Providing Program, from daily liquidity rewards to referral commissions, club-based rewards, and pool achievements.



Business Plan - End

BUSSINESS PLAN \* BUSSINESS PLAN \* BUSSINESS PLAN \* BUSSINESS PLAN \*